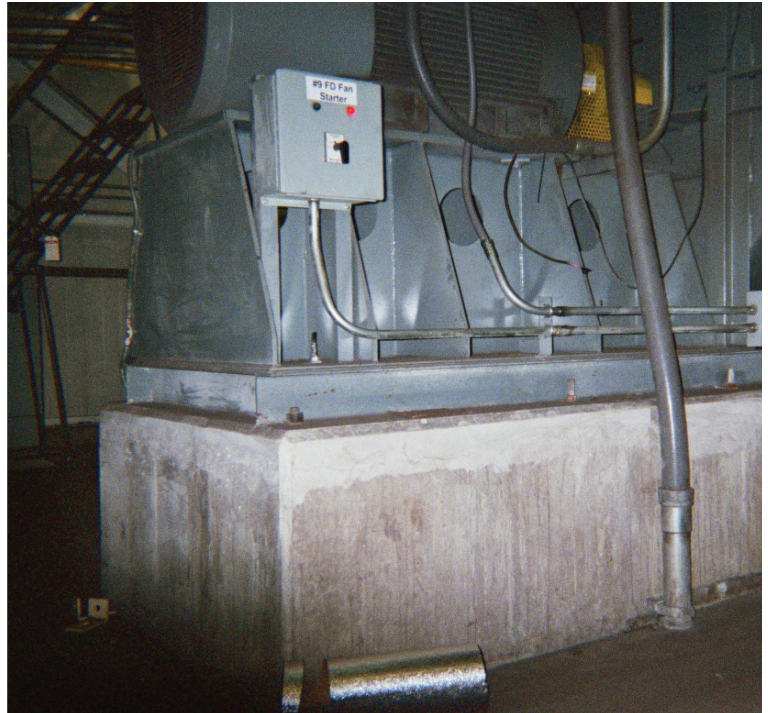




PROJECT BRIEF



Rapid Set® UltraFlow® 4000/8, USX Boiler House Fan (Gary, IN)

USX BOILER HOUSE FAN BASE GROUTING

Location:

Gary, IN

Start to finish dates:

Winter 2004 - 2005

Project Size:

6 ft. x 12 ft. x 6 in. thick

Owner:

USX Corporation

Engineer:

Orbital Engineering, Inc.

Contractor:

Graycor Industrial Contractors

Supplier:

Calumet Lumber Company

Product:

Rapid Set® UltraFlow® 4000/8

US Steel's coke plant boiler house, designed by Orbital Engineering, Inc., was behind schedule due to weather delays. With pressure mounting to re-align the project's critical path, it was necessary to find a way to complete the project on time.

A critical part of the schedule was installation, grouting and hookup of a large fan in the facility. This fan base measured approximately 6 feet by 12 feet and the grout was required to be about 6 inches thick.

Calumet Lumber recommended using Rapid Set UltraFlow 4000/8, which gains structural strength in 8 hours, versus conventional grouts that take 24 to 48 hours or more to gain strength in the cool temperature conditions within the building. Using UltraFlow allowed other trades to work on machinery sooner.

UltraFlow was approved and Graycor, Inc. installed the grout after the fan was set. The following morning, electrical and ductwork was connected. Graycor Project Superintendent Al Anton Jr. said, "The grout was easy to install and flowed under the fan base plate better than expected. The switch to UltraFlow helped to get this phase of the project back on track and completed on time."

