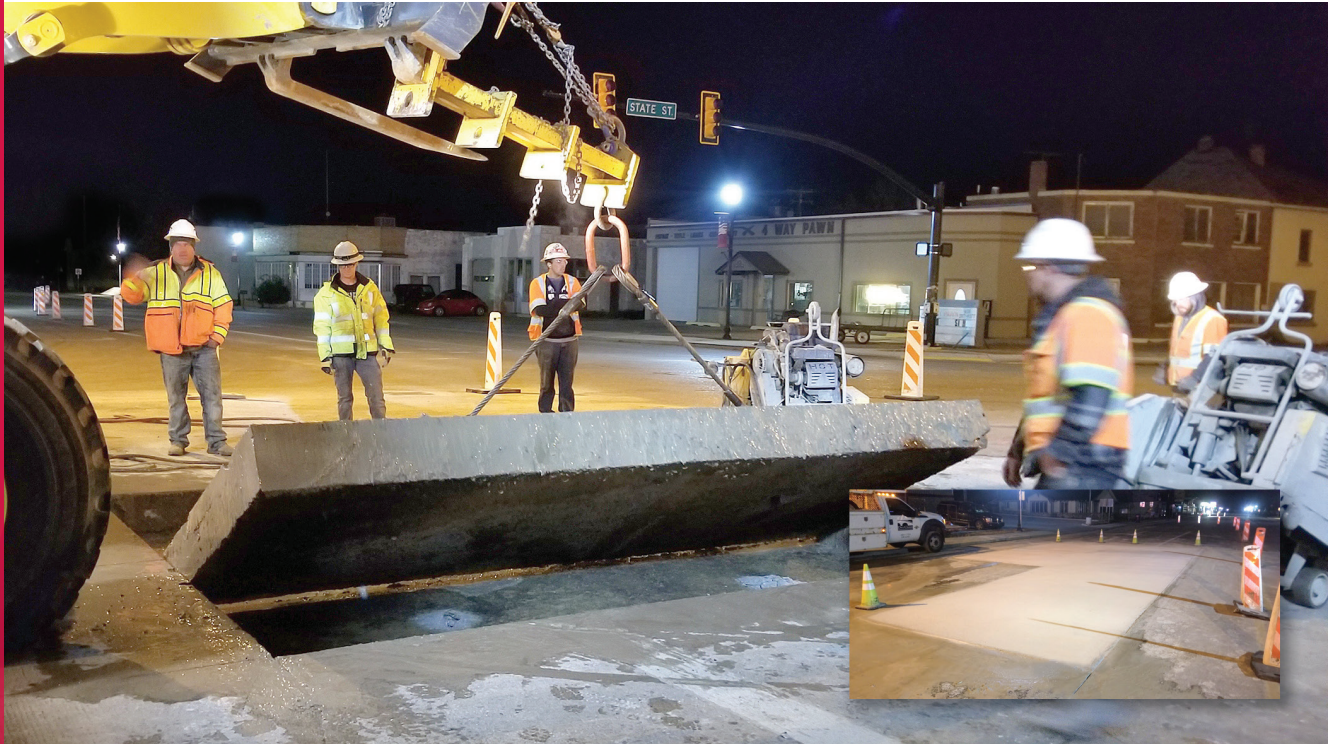




PROJECT PROFILE



US 89 STATE STREET PAVEMENT

Project Type:

Highway and Pavement

Application:

Pavement Repair

Location:

US-89/State Street, Salina, Utah

Project Dates:

April 24 – May 15, 2018

Project Owner:

UDOT Region 4

Project Size:

246 cubic yards

Product:

Rapid Set® Cement

Salina, Utah, is home to some of the largest-producing coal mines in the state. The mines are located on a steep, mountainous site with no nearby rail access, so coal must be transported by truck through downtown Salina. As a result, not only do the city's roads experience significant wear, but mine traffic depends on navigating the roads 24 hours a day, seven days a week, 365 days a year.

When US-89/State Street needed repair in 2018, traffic management was the biggest challenge. The Utah Department of Transportation (UDOT) specified rapid setting hydraulic cement concrete to achieve long-lasting repairs with a quick turnaround time.

Cool temperatures of 50–60 degrees Fahrenheit during construction optimized the workability of the Rapid Set® Cement and permitted ample finishing time. Eighty-one tons of Rapid Set were used. The product was mixed in a volumetric mixer, finished with a roller screed to achieve a longitudinal texture and cured with poly-alpha-methylstyrene (PAMS) curing compound.

UDOT used several methods of communicating with the public. Both the local radio station and the local newspaper in Salina alerted drivers of upcoming closures. The Public Involvement Team with UDOT went to the local mines and informed management and truck drivers of the upcoming construction, so that each company could plan accordingly.

PROJECT PROFILE

UDOT Region 4 was extremely happy with the State Street project because Rapid Set allowed short closure times, minimizing the project's impact on the traveling public. The reliable performance of Rapid Set is also a benefit. Even though materials suppliers can be limited in rural, rugged regions such as Salina, using Rapid Set offers UDOT a fast, durable repair solution.

CTS Cement Manufacturing Corporation manufactures Rapid Set professional-grade cement products for concrete repairs and new construction projects. Contractors, owners, engineers and architects choose Rapid Set to eliminate problems they have with other concrete repair materials, to save time and money, when superior durability is required and results need to be aesthetically pleasing. For more information about CTS Cement and Rapid Set, please visit www.CTScement.com.

ABOUT CTS CEMENT

